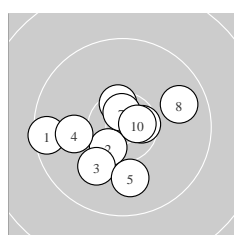
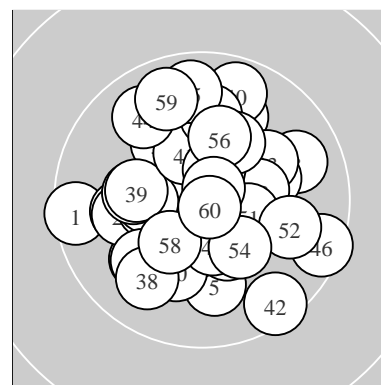
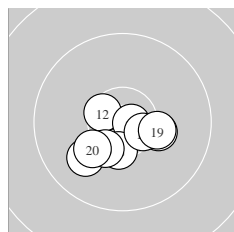


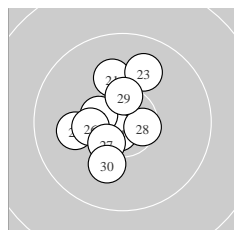
Ergebnis:	614.6	(589)
Serien:	102.4	103.9 103.3 101.3 101.2 102.5
Zähler:	49	11 0 0 0 0 0 0 0 0
Innenzehner:	29	
weiteste:	1141	(46), 1135 (1), 1135 (42)
beste Teiler	93.3	(60.) 130.6 (14.) 147.0 (57.)
Trefferlage	0.15 mm links, 0.05 mm hoch	
Streuwert	4.43, horizontal: 4.35, vertikal: 4.50	



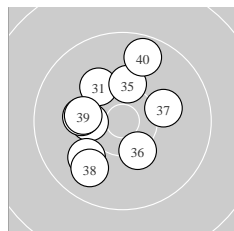
Serie 1:	9.5 ←	10.5 *	10.1 ↗	10.0 ←	10.0 ↓
	10.5 *	10.7 *	9.8 →	10.6 *	10.7 *
beste Teiler	221.3 (7.) 224.4 (10.) 289.3 (9.)				
Trefferlage	1.07 mm links, 0.85 mm tief				
Streuwert	4.70, horizontal: 5.51, vertikal: 3.72				



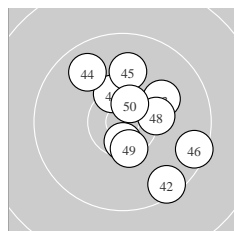
Serie 2:	10.5 *	10.5 *	10.0 ↖	10.8 *	10.4 *
	10.4 *	10.3 →	10.5 *	10.3 *	10.2 ↖
beste Teiler	130.6 (14.) 329.2 (12.) 336.3 (18.)				
Trefferlage	0.21 mm links, 2.39 mm tief				
Streuwert	3.11, horizontal: 3.84, vertikal: 2.14				



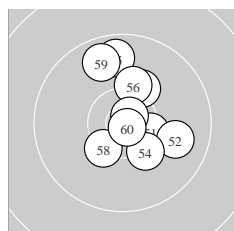
Serie 3:	10.1 ↑	10.1 ←	9.9 ↑	10.7 *	10.5 *
	10.3 *	10.5 *	10.6 *	10.5 *	10.1 ↓
beste Teiler	162.9 (24.) 305.8 (28.) 368.2 (25.)				
Trefferlage	1.59 mm links, 0.52 mm hoch				
Streuwert	3.78, horizontal: 3.20, vertikal: 4.29				



Serie 4:	10.2 ↘	10.3 *	10.0 ↖	10.2 ←	10.3 ↑
	10.3 *	10.2 →	9.9 ↖	10.2 ←	9.7 ↑
beste Teiler	492.2 (32.) 494.6 (36.) 555.0 (35.)				
Trefferlage	1.87 mm links, 0.65 mm hoch				
Streuwert	4.85, horizontal: 4.45, vertikal: 5.21				



Serie 5:	10.4 *	9.5 ↘	10.1 ↗	9.8 ↘	10.0 ↑
	9.5 →	10.6 *	10.3 *	10.4 *	10.6 *
beste Teiler	289.0 (47.) 290.4 (50.) 406.4 (49.)				
Trefferlage	2.40 mm rechts, 0.59 mm hoch				
Streuwert	5.06, horizontal: 4.59, vertikal: 5.50				



Serie 6:	10.4 *	9.9 →	10.2 ↑	10.3 ↘	9.7 ↑
	10.2 ↑	10.8 *	10.4 *	9.8 ↑	10.8 *
beste Teiler	93.3 (60.) 147.0 (57.) 434.2 (51.)				
Trefferlage	1.44 mm rechts, 1.80 mm hoch				
Streuwert	4.36, horizontal: 3.35, vertikal: 5.18				

ISSF Prone Men – *Wertung* – **Herren**

StandNr: 8

Möberg, Alex #234

StartNr: 233

25. März 2017 13:30

DEN DEN – Denmark

Unterschrift des Schützen

Meyton Elektronik