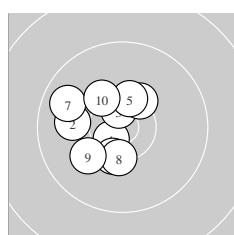
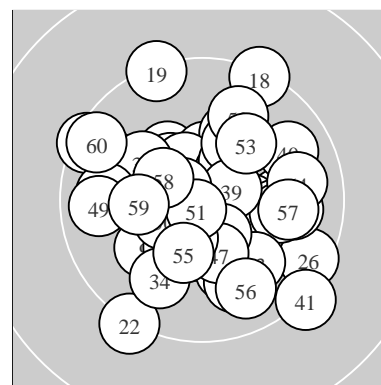
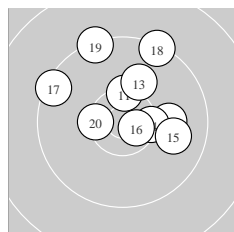


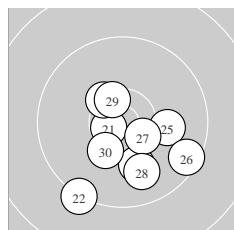
Ergebnis:	609.3	(581)
Serien:	102.9	100.3 101.3 102.2 101.8 100.8
Zähler:	41	19 0 0 0 0 0 0 0 0
Innenzehner:	28	
weiteste:	1338	(41), 1333 (22), 1269 (19)
beste Teiler	19.9	(35.) 104.6 (51.) 221.9 (44.)
Trefferlage	0.21 mm	rechts, 0.02 mm tief
Streuwert	5.06,	horizontal: 5.32, vertikal: 4.78



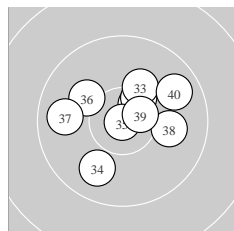
Serie 1:	10.6 *	10.0 ←	10.6 *	10.3 *	10.4 *
	10.4 *	9.8 ↖	10.4 *	10.1 ↙	10.3 ↘
beste Teiler	253.1	(1.) 269.9 (3.)	455.0 (5.)		
Trefferlage	2.55 mm	links, 0.45 mm	hoch		
Streuwert	3.81,	horizontal: 3.66, vertikal: 3.95			



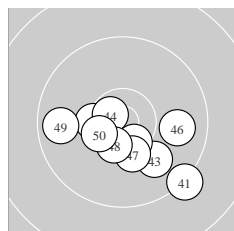
Serie 2:	10.4 *	10.1 →	10.1 ↗	10.4 *	9.9 →
	10.7 *	9.5 ↖	9.4 ↗	9.4 ↗	10.4 *
beste Teiler	229.0	(16.) 420.0 (20.)	444.4 (14.)		
Trefferlage	1.05 mm	rechts, 3.61 mm	hoch		
Streuwert	5.51,	horizontal: 5.88, vertikal: 5.11			



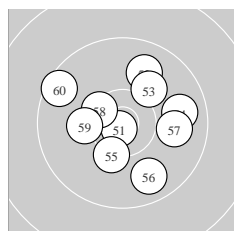
Serie 3:	10.7 *	9.3 ↙	10.4 *	10.1 ↓	10.1 →
	9.5 ↘	10.5 *	9.9 ↓	10.5 *	10.3 *
beste Teiler	233.2	(21.) 382.0 (27.)	382.6 (29.)		
Trefferlage	0.89 mm	rechts, 3.25 mm	tief		
Streuwert	4.93,	horizontal: 5.05, vertikal: 4.80			



Serie 4:	10.5 *	10.4 *	10.2 ↗	9.9 ↙	10.9 *
	10.1 ↖	9.8 ←	10.0 →	10.6 *	9.8 ↗
beste Teiler	19.9	(35.) 292.7 (39.)	335.1 (31.)		
Trefferlage	0.68 mm	rechts, 1.26 mm	hoch		
Streuwert	4.62,	horizontal: 5.40, vertikal: 3.66			



Serie 5:	9.3 ↘	10.4 *	10.0 ↘	10.7 *	10.5 *
	9.9 →	10.3 *	10.5 *	9.8 ←	10.4 *
beste Teiler	221.9	(44.) 361.4 (45.)	378.7 (48.)		
Trefferlage	0.53 mm	rechts, 2.87 mm	tief		
Streuwert	4.79,	horizontal: 5.99, vertikal: 3.15			



Serie 6:	10.8 *	9.9 ↗	10.1 ↗	9.8 →	10.3 *
	9.8 ↓	9.9 →	10.4 *	10.2 ←	9.6 ↖
beste Teiler	104.6	(51.) 413.7 (58.)	521.5 (55.)		
Trefferlage	0.68 mm	rechts, 0.67 mm	hoch		
Streuwert	5.49,	horizontal: 6.05, vertikal: 4.86			

Meyton Elektronik

ISSF Prone Women J – Wertung –

Juniorinnen A

StartNr: 780

StandNr: 17

31. März 2017 17:29

Neumann, Annika #782

GER–NS GER – NS

Unterschrift des Schützen

Meyton Elektronik