

Ergebnis: **616.0** (587)

Serien: 102.5 103.3 102.2 103.0 102.8 102.2

Zähler: 47 13 0 0 0 0 0 0 0 0

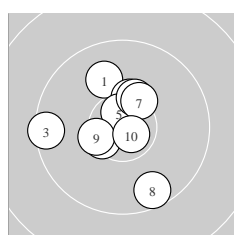
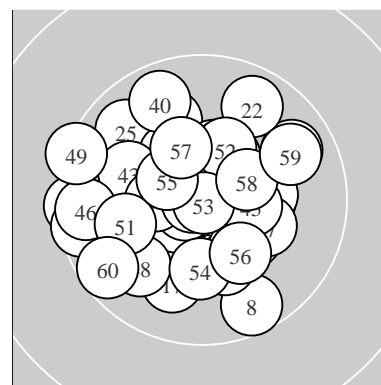
Innenzehner: 34

weiteste: 1220 (49), 1162 (3), 1121 (39)

beste Teiler 31.7 (53.) 91.0 (50.) 94.0 (31.)

Trefferlage 0.77 mm links, 0.42 mm hoch

Streuwert 4.39, horizontal: 4.74, vertikal: 4.01



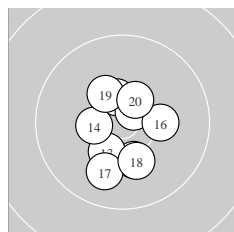
Serie 1:

10.0 ↗	10.4 *	9.5 ←	10.5 *	10.7 *
10.3 *	10.4 *	9.6 ↘	10.4 *	10.7 *

beste Teiler 168.5 (10.) 232.6 (5.) 369.4 (4.)

Trefferlage 1.07 mm links, 0.78 mm hoch

Streuwert 4.69, horizontal: 4.59, vertikal: 4.79



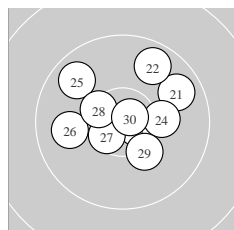
Serie 2:

10.2 ↘	10.5 *	10.3 *	10.4 *	10.7 *
10.2 →	10.0 ↙	10.2 ↘	10.3 *	10.5 *

beste Teiler 229.1 (15.) 388.7 (12.) 388.7 (20.)

Trefferlage 0.01 mm rechts, 1.10 mm tief

Streuwert 3.83, horizontal: 3.09, vertikal: 4.44



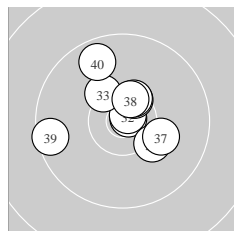
Serie 3:

9.8 ↗	9.7 ↗	10.7 *	10.2 →	9.8 ↘
9.9 ←	10.6 *	10.4 *	10.3 ↘	10.8 *

beste Teiler 134.2 (30.) 236.7 (23.) 311.7 (27.)

Trefferlage 0.43 mm rechts, 1.39 mm hoch

Streuwert 4.79, horizontal: 5.47, vertikal: 4.01



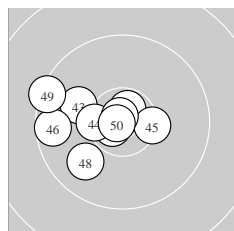
Serie 4:

10.8 *	10.8 *	10.3 *	10.5 *	10.5 *
10.2 ↘	10.2 ↘	10.5 *	9.5 ←	9.7 ↘

beste Teiler 94.0 (31.) 119.7 (32.) 351.7 (38.)

Trefferlage 0.10 mm links, 1.62 mm hoch

Streuwert 4.31, horizontal: 4.79, vertikal: 3.78



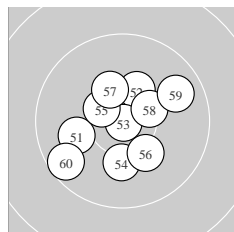
Serie 5:

10.7 *	10.7 *	10.1 ↘	10.4 *	10.4 *
9.6 ←	10.8 *	9.9 ↗	9.4 ↘	10.8 *

beste Teiler 91.0 (50.) 99.7 (47.) 179.2 (41.)

Trefferlage 3.62 mm links, 0.11 mm hoch

Streuwert 4.06, horizontal: 5.06, vertikal: 2.72



Serie 6:

10.0 ←	10.3 *	10.9 *	10.2 ↓	10.5 *
10.2 ↘	10.3 *	10.4 *	9.8 ↗	9.6 ↙

beste Teiler 31.7 (53.) 369.4 (55.) 447.5 (58.)

Trefferlage 0.29 mm links, 0.24 mm tief

Streuwert 4.76, horizontal: 5.10, vertikal: 4.40

Meyton Elektronik

**ISSF Prone Women J** – Wertung –

**Juniorinnen A**

**StartNr: 1048**

StandNr: 23

31. März 2017 17:30

**Janshen, Anna** #1051

GER–NRW GER – NRW

---

\_\_\_\_\_  
Unterschrift des Schützen

Meyton Elektronik