

Ergebnis: **617.0** (587)

Serien: 104.0 102.8 104.1 101.4 103.3 101.4

Zähler: 47 13 0 0 0 0 0 0 0 0

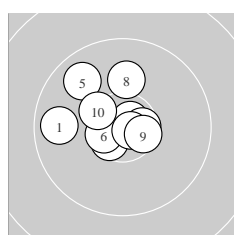
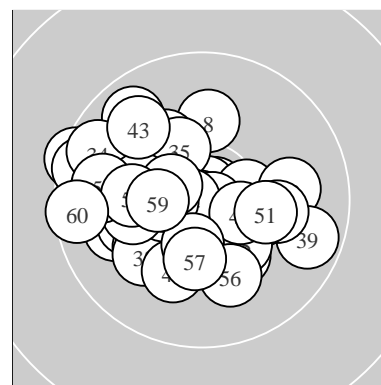
Innenzehner: 31

weiteste: 1189 (20), 1124 (60), 1101 (28)

beste Teiler 37.3 (26.) 88.8 (14.) 98.6 (31.)

Trefferlage 2.14 mm links, 0.04 mm tief

Streuwert 4.10, horizontal: 4.87, vertikal: 3.16



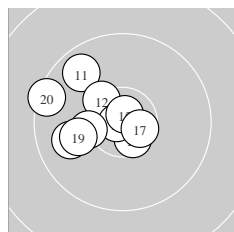
Serie 1:

9.8 ←	10.8 *	10.6 *	10.6 *	9.8 ↘
10.6 *	10.8 *	10.1 ↑	10.5 *	10.4 *

beste Teiler 129.2 (7.) 154.9 (2.) 291.1 (4.)

Trefferlage 1.50 mm links, 1.30 mm hoch

Streuwert 3.68, horizontal: 4.07, vertikal: 3.24



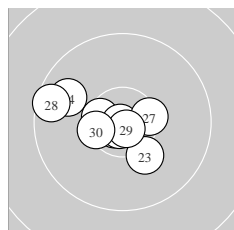
Serie 2:

9.8 ↘	10.4 *	10.6 *	10.8 *	10.8 *
9.9 ←	10.6 *	10.3 *	10.1 ←	9.5 ↖

beste Teiler 88.8 (14.) 120.0 (15.) 275.6 (17.)

Trefferlage 3.65 mm links, 0.59 mm hoch

Streuwert 3.94, horizontal: 4.50, vertikal: 3.28



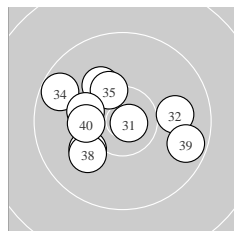
Serie 3:

10.7 *	10.8 *	10.2 ↘	9.8 ↖	10.5 *
10.9 *	10.4 *	9.6 ←	10.8 *	10.4 *

beste Teiler 37.3 (26.) 114.1 (29.) 123.6 (22.)

Trefferlage 2.02 mm links, 0.13 mm tief

Streuwert 3.70, horizontal: 4.65, vertikal: 2.40



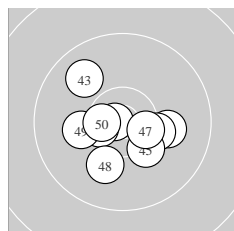
Serie 4:

10.8 *	10.0 →	10.2 ↘	9.7 ↖	10.3 *
10.2 ←	10.1 ↗	10.1 ↗	9.7 →	10.3 ←

beste Teiler 98.6 (31.) 502.8 (35.) 545.1 (40.)

Trefferlage 1.78 mm links, 0.35 mm hoch

Streuwert 5.04, horizontal: 6.10, vertikal: 3.69



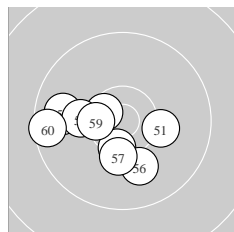
Serie 5:

10.1 →	10.3 *	9.9 ↘	10.8 *	10.3 *
10.5 *	10.5 *	10.1 ↓	10.2 ←	10.6 *

beste Teiler 117.0 (44.) 311.1 (50.) 352.4 (46.)

Trefferlage 0.34 mm links, 0.96 mm tief

Streuwert 4.01, horizontal: 4.64, vertikal: 3.26



Serie 6:

10.2 →	9.8 ←	10.4 *	9.8 ←	10.6 *
10.1 ↓	10.3 ↓	10.2 ←	10.5 *	9.5 ←

beste Teiler 305.9 (55.) 398.0 (59.) 407.7 (53.)

Trefferlage 3.54 mm links, 1.44 mm tief

Streuwert 4.34, horizontal: 5.41, vertikal: 2.89

Meyton Elektronik

ISSF Prone Men – *Wertung* – **Herren**

StandNr: 11

Mutch, Melvin #615

StartNr: 613

25. März 2017 15:02

GBR–Police GBR – Police

Unterschrift des Schützen

Meyton Elektronik