

Ergebnis: **611.9** (582)

Serien: 102.0 103.6 102.0 104.4 100.4 99.5

Zähler: 42 18 0 0 0 0 0 0 0 0

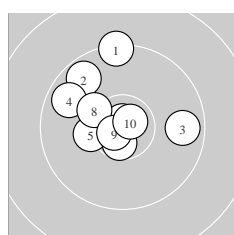
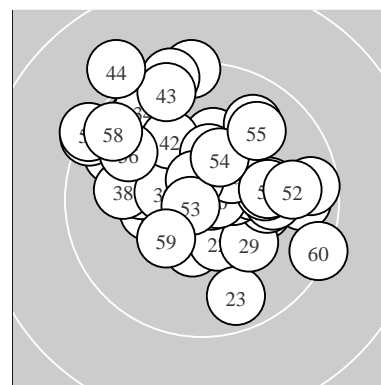
Innenzehner: 30

weiteste: 1507 (44), 1272 (57), 1264 (1)

beste Teiler 62.0 (16.) 89.2 (31.) 96.2 (6.)

Trefferlage 0.03 mm links, 2.08 mm hoch

Streuwert 4.79, horizontal: 5.26, vertikal: 4.26



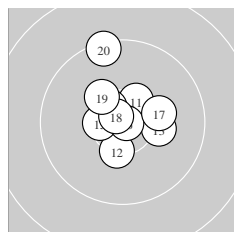
Serie 1:

9.4 ↑	9.7 ↘	9.7 →	9.7 ↙	10.3 *
10.8 *	10.6 *	10.3 *	10.7 *	10.8 *

beste Teiler 96.2 (6.) 151.8 (10.) 163.0 (9.)

Trefferlage 1.66 mm links, 2.46 mm hoch

Streuwert 4.86, horizontal: 5.05, vertikal: 4.66



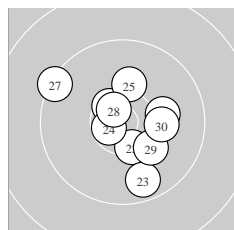
Serie 2:

10.4 *	10.4 *	10.2 →	10.5 *	10.5 *
10.9 *	10.2 →	10.8 *	10.3 *	9.4 ↑

beste Teiler 62.0 (16.) 140.1 (18.) 321.2 (14.)

Trefferlage 0.03 mm rechts, 1.81 mm hoch

Streuwert 3.93, horizontal: 3.54, vertikal: 4.29



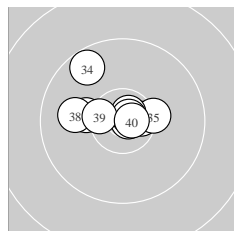
Serie 3:

10.5 *	10.4 *	9.7 ↓	10.7 *	10.2 ↑
10.1 →	9.4 ↙	10.6 *	10.2 ↘	10.2 →

beste Teiler 237.3 (24.) 245.2 (28.) 335.2 (21.)

Trefferlage 0.64 mm rechts, 0.06 mm tief

Streuwert 4.98, horizontal: 5.17, vertikal: 4.78



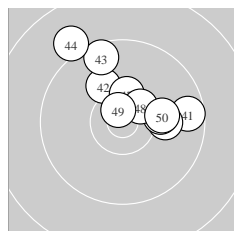
Serie 4:

10.8 *	10.6 *	10.2 ←	9.7 ↘	10.3 *
10.7 *	10.8 *	10.0 ←	10.5 *	10.8 *

beste Teiler 89.2 (31.) 123.7 (37.) 147.2 (40.)

Trefferlage 1.06 mm links, 1.45 mm hoch

Streuwert 3.52, horizontal: 4.29, vertikal: 2.54



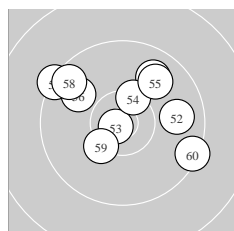
Serie 5:

9.6 →	10.1 ↘	9.6 ↖	9.1 ↘	10.1 →
10.2 →	10.4 *	10.5 *	10.7 *	10.1 →

beste Teiler 205.3 (49.) 378.4 (48.) 454.9 (47.)

Trefferlage 1.77 mm rechts, 4.08 mm hoch

Streuwert 5.10, horizontal: 5.78, vertikal: 4.31



Serie 6:

9.9 ↗	9.9 →	10.8 *	10.4 *	9.9 ↗
9.9 ↘	9.4 ↘	9.6 ↘	10.3 *	9.4 ↘

beste Teiler 125.2 (53.) 442.9 (54.) 507.3 (59.)

Trefferlage 0.06 mm rechts, 2.75 mm hoch

Streuwert 6.22, horizontal: 7.54, vertikal: 4.53

Meyton Elektronik

ISSF Prone Women – Wertung – Damen

StandNr: 12

Eckhardt, Jana #326

StartNr: 325

25. März 2017 9:03

GER–ST GER – ST

Unterschrift des Schützen

Meyton Elektronik