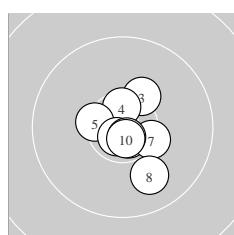
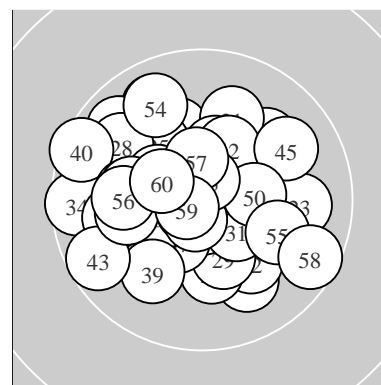
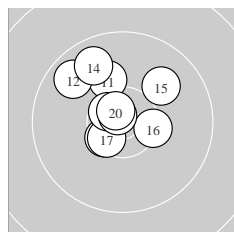


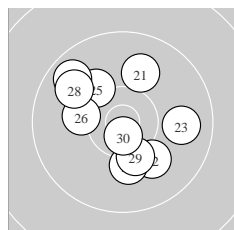
Ergebnis:	618.2	(588)
Serien:	105.4	103.2 101.2 102.3 103.7 102.4
Zähler:	48	12 0 0 0 0 0 0 0 0
Innenzehner:	33	
weiteste:	1145	(40), 1098 (34), 1073 (58)
beste Teiler	77.0	(2.) 109.7 (41.) 119.8 (19.)
Trefferlage	1.17 mm	links, 0.51 mm hoch
Streuwert	4.18,	horizontal: 4.60, vertikal: 3.71



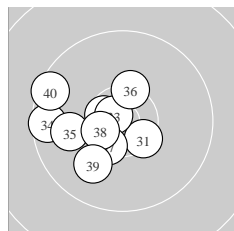
Serie 1:	10.7 *	10.9 *	10.3 *	10.6 *	10.4 *
	10.7 *	10.4 *	9.9 ↘	10.8 *	10.7 *
beste Teiler	77.0 (2.)	155.2 (9.)	163.4 (6.)		
Trefferlage	0.74 mm rechts, 0.75 mm tief				
Streuwert	2.80, horizontal: 2.45, vertikal: 3.10				



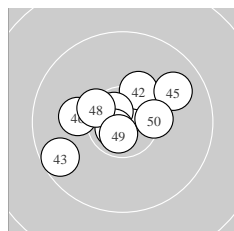
Serie 2:	10.1 ↗	9.8 ↖	10.5 *	9.8 ↖	10.0 ↗
	10.4 *	10.5 *	10.6 *	10.8 *	10.7 *
beste Teiler	119.8 (19.)	194.3 (20.)	267.1 (18.)		
Trefferlage	1.25 mm links, 2.46 mm hoch				
Streuwert	3.80, horizontal: 3.80, vertikal: 3.80				



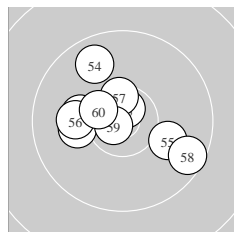
Serie 3:	10.0 ↗	10.1 ↘	9.9 →	10.2 ↓	10.2 ↖
	10.2 ←	9.7 ↖	9.9 ↖	10.3 ↓	10.7 *
beste Teiler	202.2 (30.)	535.6 (29.)	610.8 (26.)		
Trefferlage	0.59 mm links, 0.49 mm hoch				
Streuwert	5.22, horizontal: 5.32, vertikal: 5.12				



Serie 4:	10.5 *	10.6 *	10.8 *	9.6 ←	10.0 ←
	10.4 *	10.4 *	10.5 *	10.0 ↗	9.5 ↖
beste Teiler	156.7 (33.)	289.3 (32.)	355.3 (38.)		
Trefferlage	3.89 mm links, 0.49 mm tief				
Streuwert	4.06, horizontal: 4.65, vertikal: 3.38				



Serie 5:	10.8 *	10.3 *	9.6 ↙	10.7 *	9.9 ↗
	10.1 ←	10.8 *	10.4 *	10.7 *	10.4 *
beste Teiler	109.7 (41.)	153.2 (47.)	183.1 (49.)		
Trefferlage	0.78 mm links, 0.71 mm hoch				
Streuwert	4.05, horizontal: 4.95, vertikal: 2.88				



Serie 6:	10.2 ←	10.1 ←	10.7 *	9.8 ↖	10.1 →
	10.1 ←	10.5 *	9.6 ↘	10.8 *	10.5 *
beste Teiler	148.0 (59.)	186.1 (53.)	360.4 (57.)		
Trefferlage	1.25 mm links, 0.68 mm hoch				
Streuwert	4.70, horizontal: 5.57, vertikal: 3.64				

Meyton Elektronik

ISSF Prone Women – Wertung – Damen

StandNr: 17

Palberg, Denise #1057

StartNr: 1054

25. März 2017 10:19

GER–NRW GER – NRW

Unterschrift des Schützen

Meyton Elektronik