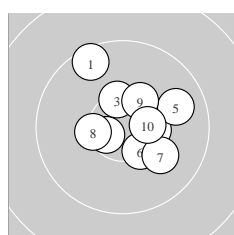
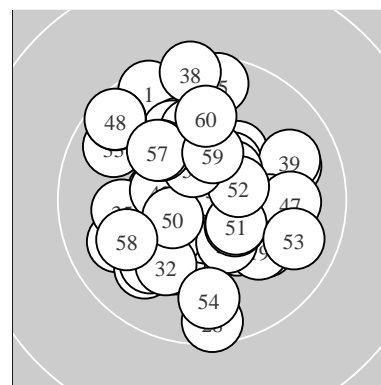
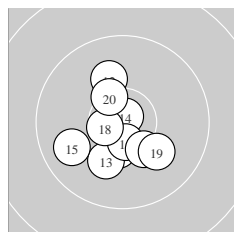


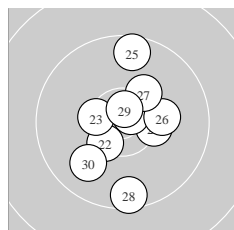
Ergebnis: **613.1** (586)
 Serien: 102.6 103.4 102.2 101.3 101.6 102.0
 Zähler: 46 14 0 0 0 0 0 0 0
 Innenzehner: 30
 weiteste: 1174 (38), 1115 (28), 1108 (1)
 beste Teiler 95.3 (14.) 154.8 (24.) 172.1 (37.)
 Trefferlage 0.01 mm rechts, 0.60 mm hoch
 Streuwert 4.60, horizontal: 4.40, vertikal: 4.80



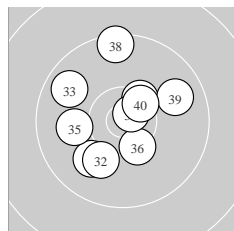
Serie 1:
 9.6 ↖ 10.6 * 10.4 * 10.4 * 9.9 ↗
 10.4 * 10.1 ↘ 10.4 * 10.3 * 10.5 *
 beste Teiler 274.6 (2.) 382.5 (10.) 430.0 (3.)
 Trefferlage 1.49 mm rechts, 1.13 mm hoch
 Streuwert 4.36, horizontal: 4.45, vertikal: 4.26



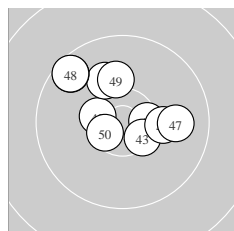
Serie 2:
 10.4 * 10.1 ↖ 10.2 ↙ 10.8 * 9.9 ↗
 10.6 * 10.3 * 10.6 * 10.1 ↘ 10.4 *
 beste Teiler 95.3 (14.) 281.3 (18.) 308.4 (16.)
 Trefferlage 0.84 mm links, 1.51 mm tief
 Streuwert 3.82, horizontal: 3.54, vertikal: 4.08



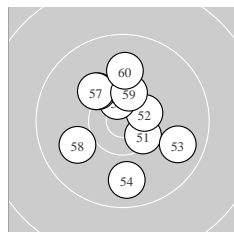
Serie 3:
 10.3 * 10.4 * 10.4 * 10.8 * 9.6 ↑
 10.2 → 10.3 ↗ 9.6 ↓ 10.7 * 9.9 ↘
 beste Teiler 154.8 (24.) 200.1 (29.) 412.4 (23.)
 Trefferlage 0.60 mm rechts, 0.19 mm tief
 Streuwert 4.91, horizontal: 3.68, vertikal: 5.89



Serie 4:
 10.0 ↙ 10.1 ↙ 9.8 ↘ 10.4 * 10.0 ←
 10.4 * 10.7 * 9.5 ↑ 9.9 → 10.5 *
 beste Teiler 172.1 (37.) 381.1 (40.) 433.2 (34.)
 Trefferlage 0.76 mm links, 1.09 mm hoch
 Streuwert 5.27, horizontal: 5.10, vertikal: 5.44



Serie 5:
 10.5 * 10.5 * 10.5 * 10.2 → 10.1 ↖
 9.6 ↘ 9.9 → 9.6 ↘ 10.1 ↑ 10.6 *
 beste Teiler 314.5 (50.) 373.3 (41.) 384.6 (43.)
 Trefferlage 0.50 mm links, 2.39 mm hoch
 Streuwert 4.85, horizontal: 5.58, vertikal: 3.98



Serie 6:
 10.5 * 10.5 * 9.8 ↘ 9.8 ↓ 10.6 *
 10.2 ↘ 10.2 ↘ 10.0 ↙ 10.4 * 10.0 ↑
 beste Teiler 315.8 (55.) 354.9 (52.) 381.5 (51.)
 Trefferlage 0.12 mm rechts, 0.69 mm hoch
 Streuwert 4.76, horizontal: 4.37, vertikal: 5.12

Meyton Elektronik

ISSF Prone Women – Wertung – Damen

StandNr: 18

Plengemeyer, Inken #1142

StartNr: 1139

25. März 2017 11:49

GER–WF GER – WF

Unterschrift des Schützen

Meyton Elektronik