

Ergebnis: **617.3** (589)

Serien: 102.8 103.0 103.7 103.4 103.5 100.9

Zähler: 49 11 0 0 0 0 0 0 0

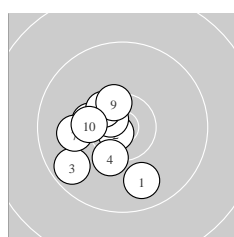
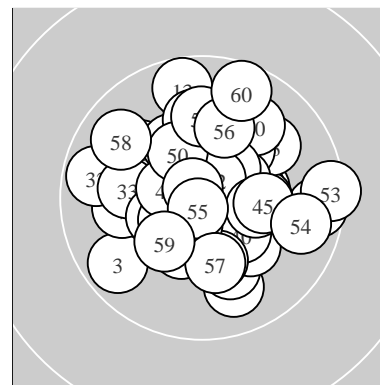
Innenzehner: 32

weiteste: 1200 (53), 1075 (17), 1061 (60)

beste Teiler 67.1 (36.) 97.1 (12.) 105.4 (55.)

Trefferlage 0.07 mm rechts, 0.69 mm hoch

Streuwert 4.26, horizontal: 4.59, vertikal: 3.90



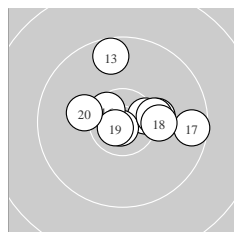
Serie 1:

9.9 ↘	10.8 *	9.7 ↙	10.3 *	10.3 *
10.7 *	10.0 ←	10.4 *	10.4 *	10.3 *

beste Teiler 137.7 (2.) 226.3 (6.) 403.2 (9.)

Trefferlage 3.17 mm links, 1.16 mm tief

Streuwert 3.62, horizontal: 3.27, vertikal: 3.95



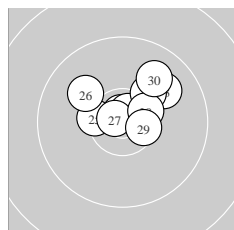
Serie 2:

10.5 *	10.8 *	9.7 ↑	10.3 →	10.3 *
10.6 *	9.6 →	10.2 →	10.8 *	10.2 ←

beste Teiler 97.1 (12.) 143.2 (19.) 304.0 (16.)

Trefferlage 1.85 mm rechts, 1.35 mm hoch

Streuwert 4.22, horizontal: 4.98, vertikal: 3.28



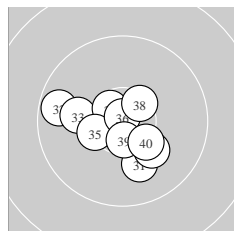
Serie 3:

10.8 *	10.7 *	9.9 ↗	10.2 ↗	10.4 *
10.0 ↖	10.8 *	10.5 *	10.5 *	9.9 ↗

beste Teiler 134.6 (27.) 148.9 (21.) 182.9 (22.)

Trefferlage 1.13 mm rechts, 2.57 mm hoch

Streuwert 3.31, horizontal: 4.02, vertikal: 2.41



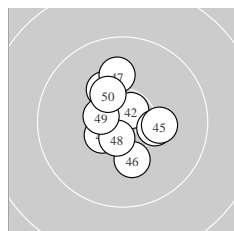
Serie 4:

10.1 ↘	9.7 ←	10.1 ←	10.6 *	10.4 *
10.9 *	10.2 ↘	10.5 *	10.6 *	10.3 *

beste Teiler 67.1 (36.) 275.0 (34.) 292.9 (39.)

Trefferlage 0.93 mm links, 1.07 mm tief

Streuwert 4.07, horizontal: 4.78, vertikal: 3.19



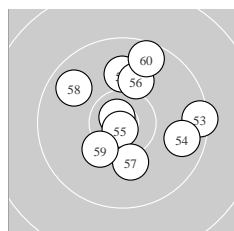
Serie 5:

10.2 ↖	10.7 *	10.3 *	10.5 *	10.2 →
10.2 ↓	10.0 ↑	10.6 *	10.5 *	10.3 *

beste Teiler 218.6 (42.) 264.7 (48.) 345.9 (49.)

Trefferlage 0.00 mm , 0.75 mm hoch

Streuwert 3.63, horizontal: 3.29, vertikal: 3.95



Serie 6:

10.8 *	10.0 ↑	9.5 →	9.8 →	10.8 *
10.1 ↑	10.2 ↓	9.8 ↖	10.3 ↙	9.6 ↑

beste Teiler 105.4 (55.) 125.8 (51.) 536.0 (59.)

Trefferlage 1.57 mm rechts, 1.75 mm hoch

Streuwert 5.54, horizontal: 5.71, vertikal: 5.37

Meyton Elektronik

ISSF Prone Women J – Wertung –

Juniorinnen A

StartNr: 942

StandNr: 15

31. März 2017 12:34

Grundsöe, Stephanie #945

NOR–NTG NOR – NTG

Unterschrift des Schützen

Meyton Elektronik