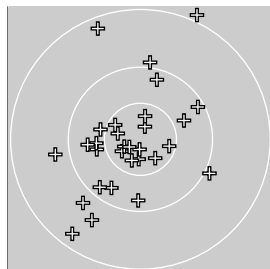
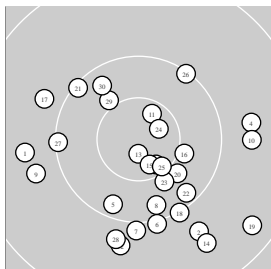


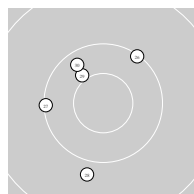
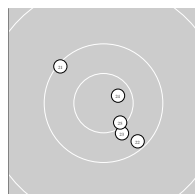
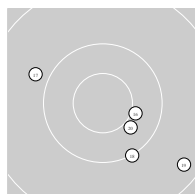
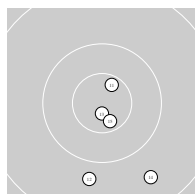
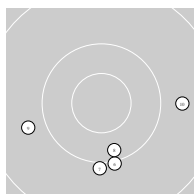
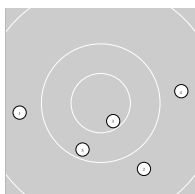
Ergebnis: 581	290	Serien:	47	48	48	48	50	49
	291		49	49	50	47	47	49
Zähler:	42	17	1	0	0	0	Innenzehner:	21



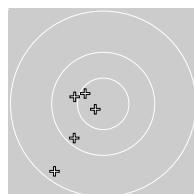
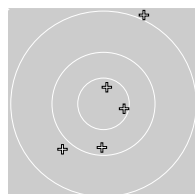
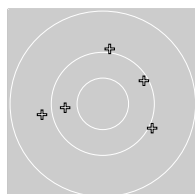
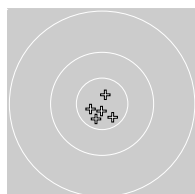
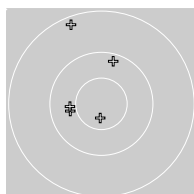
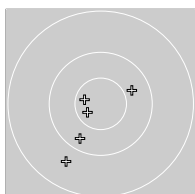
Comp. Precision

Comp. Rapid Fire

Serie 1:	9.7 ← [S+12.99]	9.7 ↘ [+67.59]	10.6 * [+26.25]	9.7 → [+68.76]	10.2 ↓ [+31.66] [S+207.25]
Serie 2:	10.0 ↓ [S+41.27]	10.0 ↓ [+61.90]	10.2 ↓ [+37.73]	9.8 ← [+33.22]	9.7 → [+32.66] [S+206.78]
Serie 3:	10.6 * [S+45.02]	9.8 ↓ [+35.67]	10.8 * [+32.33]	9.6 ↘ [+28.51]	10.7 * [S+172.94]
Serie 4:	10.4 * [S+49.08]	9.8 ↖ [+34.95]	10.0 ↘ [+31.90]	9.3 ↘ [+27.80]	10.4 ↘ [+39.20] [S+182.93]
Serie 5:	10.1 ↘ [S+21.50]	10.2 ↘ [+67.67]	10.4 * [+34.64]	10.7 * [S+31.14]	10.6 * [S+188.16]
Serie 6:	10.1 ↗ [S+48.65]	10.1 ← [+73.69]	9.8 ↓ [+35.15]	10.4 * [S+32.48]	10.2 ↘ [+29.33] [S+219.30]



Serie 1:	10.3 ↗ [S+3.10]	10.7 * [S+2.68]	10.6 * [S+2.67]	10.2 ↓ [S+2.92]	9.6 ↓ [S+3.00]
Serie 2:	9.2 ↖ [S+2.51]	10.4 ← [S+2.82]	10.7 * [S+2.85]	10.1 ↑ [S+2.73]	10.4 ← [S+2.54]
Serie 3:	10.7 * [S+2.65]	10.8 * [S+2.87]	10.8 * [S+2.55]	10.7 * [S+2.70]	10.6 * [S+2.66]
Serie 4:	9.9 ↑ [S+2.79]	9.8 ← [S+2.86]	10.1 ↗ [S+2.81]	10.3 ← [S+2.82]	9.9 ↘ [S+2.71]
Serie 5:	10.6 * [S+2.79]	8.9 ↗ [S+2.79]	9.8 ↗ [S+2.52]	10.1 ↓ [S+2.49]	10.6 * [S+2.68]
Serie 6:	10.1 ↗ [S+2.83]	10.4 ↖ [S+2.71]	9.3 ↓ [S+2.68]	10.8 * [S+2.62]	10.6 * [S+2.53]



Unterschrift des Schützen

Meyton Elektronik